



424Edger

EDGING WALK BEHIND TROWELLING MACHINE

ab lin-pro

Art. No 11116
Page 1 (2)
[page 237]



Small edger trowel with rotor diameter of 61 cm and low weight enables you to work in narrow places.

424Edger



Strong rotating guard ring

makes it possible to trowel close to walls and pillars. A soft strip on the ring protects the surface against damages.



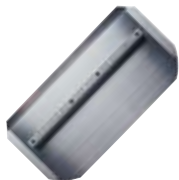
Blade pitch

is located close to operator for easy adjustment.



Special folding handle

saves space during transport and enables quick assembly.



The 90° (angle) edging pans

makes it possible to trowel very close to walls and pillars.

Basic information:	424Edger
Rotor (diameter)	61 cm
Number of blades	4
Guard ring diameter	61 cm
Size when folded (LxWxH)	98 cm x 61 cm x 68 cm
Rotor speed	60-125 rpm
Weight	48 kg
Emergency stop	Automatically after safety handle is released
Blade pitch control	Fine pitch control
Finish blades	Art. No 11508 23,5 cm x 12,7 cm (3 kg)
Trowel pan	Art. No 11629 61 cm (7 kg)
Engine:	Honda 5,5 hp, petrol

424EHO5,5

ab lin-pro

Box 5, Femvägsskålet 3, 421 21 V. Frölunda, Sweden
Tfn. +46-31-69-49-10. Fax +46-31-29-88-76
info@alleneurope.com www.concretefloor.com